

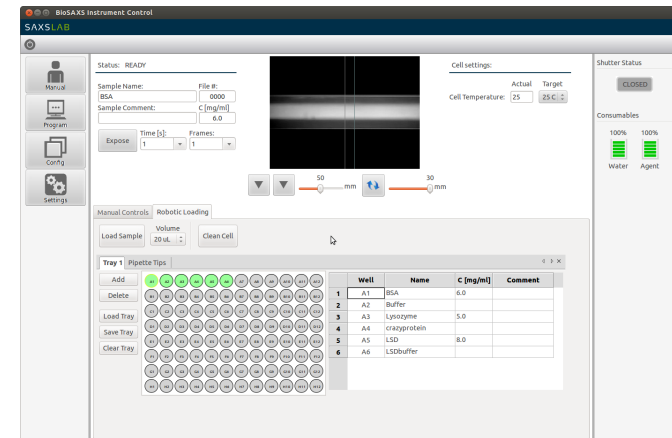
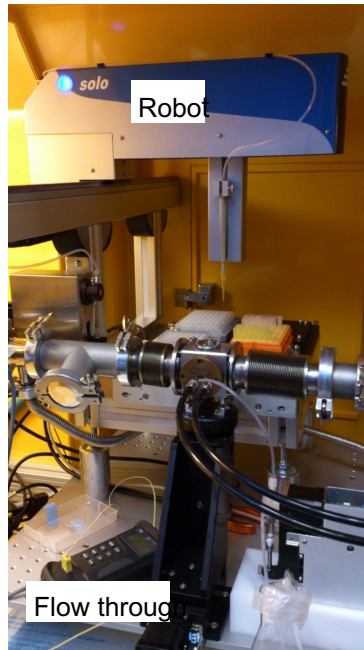
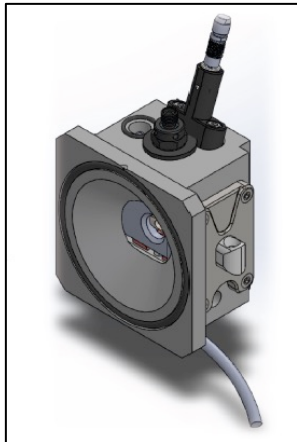
BioSAXS @CoSAXS beamline

ann.terry@maxiv.lu.se

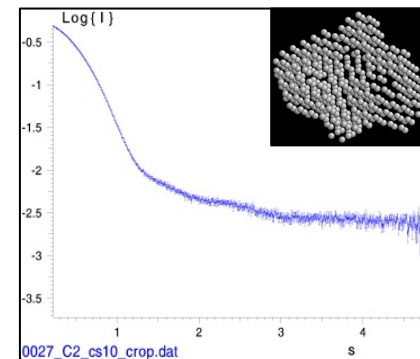
- Two modes of operation for BioSAXS:
 - Automatic pipetting of samples from thermostatically controlled 96-well plate
 - SEC-SAXS
 - In-line UV-Vis
- In addition:
 - Pump-probe laser induced temperature jump
 - Microfluidic flow devices
 - Combined spectroscopy with SAXS

BioCUBE cell.

New: UV-vis operation and on axis sample visualization



Modeling pipeline system (based on EMBL platform)
On-line evaluation and first structural models

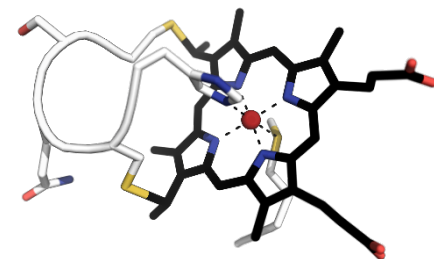
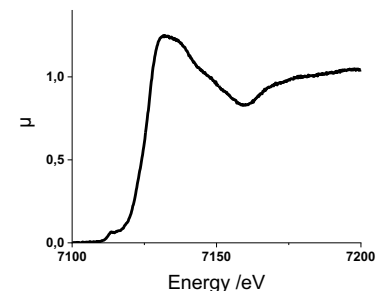
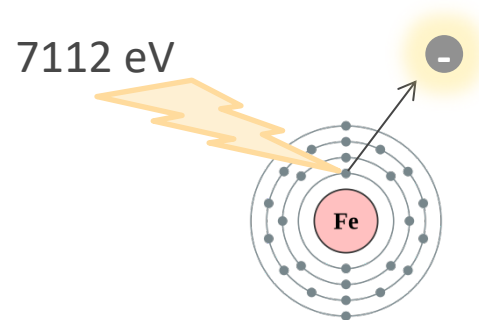


Co-financed project: Novo Nordisk/
Copenhagen University/MAX IV Lab

Bio-XAS @Balder beamline

- Investigate the **metal sites** in your proteins with X-ray Absorption Spectroscopy.
- XANES, EXAFS and XES @Balder
- Get local atomic structure, oxidation state
- Cryostat or room temperature flow cell (AdaptoCell)
- Interested?

Contact: Kajsa.Sigfridsson_Clauss@maxiv.lu.se



Wikipedia:
Cytochrome-c-CXXCH-heme-
binding-pdb-3ZCF.png