

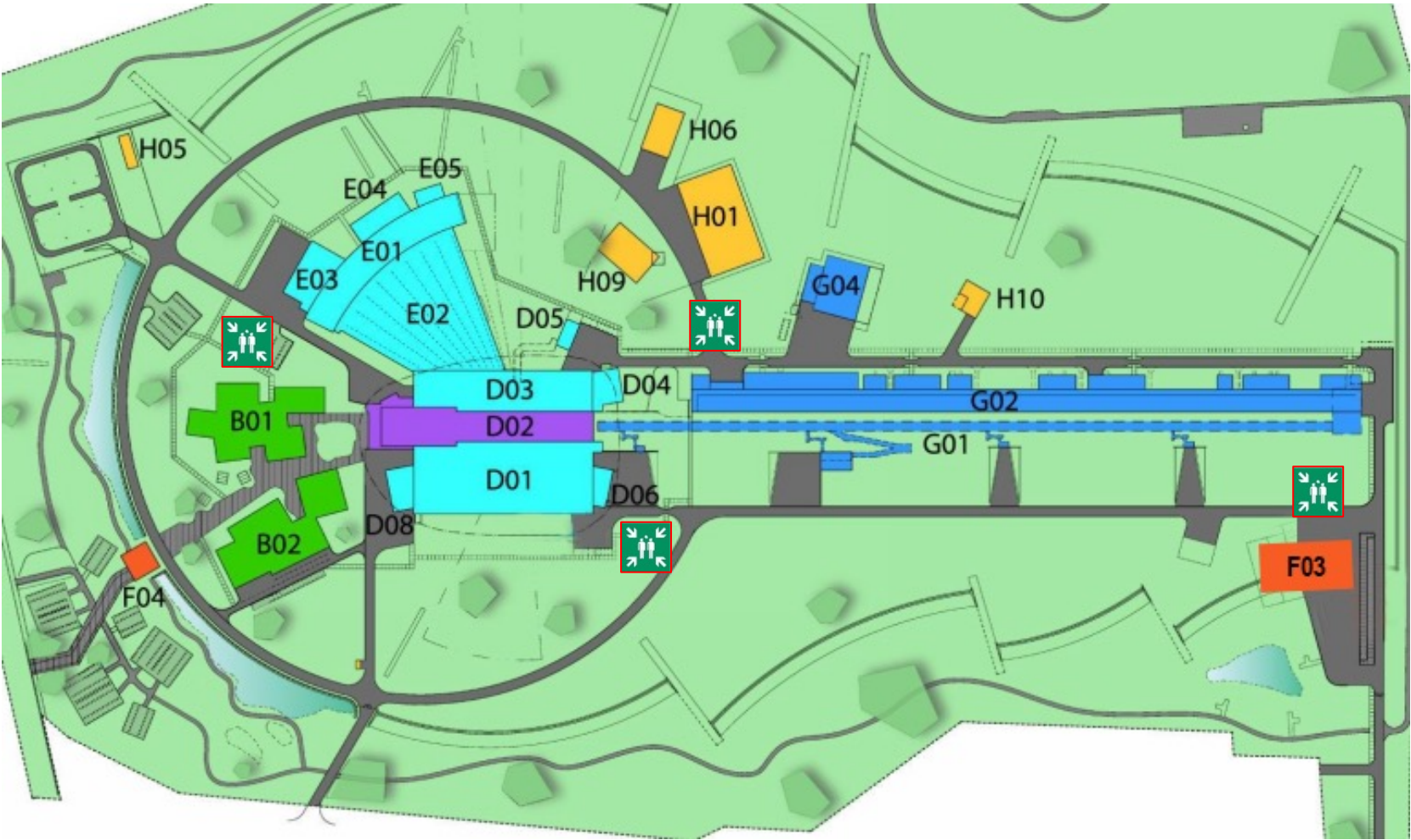


**EUROPEAN  
SPALLATION  
SOURCE**

Welcome to ESS!



# Emergency assembly points



If the fire or ODH alarm sounds: evacuate promptly and find your nearest Assembly point. Your guide will take you there!

 Assembly points

# ESS



“Our mission is to design, build and operate ESS in a safe and sustainable way.”

- ESS will strive for continuous improvements within the organisational, social and physical work environment.
- We ask you to demonstrate personal responsibility and commitment to **health** and **safety**, the **environment** and **security** whilst visiting ESS.
- We ask you to treat each other with respect and we will not tolerate any form of discrimination or harassment.
- Take care of each other – interfere when you notice unsafe behaviour.



On the ESS site



# Personal Protective Equipment



Visitors

Staff

Safety



**PPE requirements per area**

- No PPE required
- High-visibility vest, closed/flat shoes
- PPE requirements depending on area. For further information, contact the Building Area Manager
- Safety shoes, high-visibility vest, helmet\*
- Safety shoes, high-visibility vest, helmet, goggles and gloves

- Reassembly point
- Pedestrian and bike routes
- Installation & field support site office

**Buildings**

- B01 - ESS Main Office
- B02 - ESS Technical workshops
- F04 - ESS main Entrance
- F01 - Pump station
- F03 - Logistics centre
- G01 - Accelerator tunnel
- G02 - Klystron gallery
- G04 - Cryo compressor building
- H01 - Central utility building
- H05 - Primary substation
- H06 - Distribution substation
- H09 - Waste treatment facility
- H10 - Sprinkler central
- D01 - Experimental hall 1
- D02 - Target station
- D03 - Experimental hall 2
- D04 - Lab
- D05 - Substation
- D06 - Substation
- D08 - Lab
- E01 - Experimental hall 3
- E02 - Beamline gallery
- E03 - Lab
- E04 - Lab
- E05 - Substation

\*Alterations may be made based upon a risk assessment.

Red zone: full PPE includes red helmet, high visibility vest, safety glasses, safety gloves and safety shoes/overshoes.

# Barriers and signs

Respect and do not cross

- Barriers are put up to prevent others to access a hazardous area.
- Do not cross any barriers and stay with your guide.
- Obey all signs, ask your guide when in doubt.



# During your visit



Always follow your guide and their instructions. Do not walk away from the group.



Use designated walkways. Beware of bikes sharing the walkways.



Be aware that vehicles have 'right of way' on the site.



Do not make phone calls during the visit.



Do not touch any equipment.



Please inform your host if you have any special needs such as; Claustrophobia, medical implants etc. that may be important for us to know and could affect the visit.





# We hope you will enjoy your visit

You have now been informed of our safety rules.

Feel free to ask any questions to your visit responsible.





# Head sets for Visitors

Receiver/transmitter with headset and one-ear headphones



QUICK  
TOUR

ListenTALK

LISTEN  
TECHNOLOGIES



HEADSET PORT

POWER BUTTON



CHARGING STATUS LED



VOLUME CONTROLS

# QUICK TOUR

ListenTALK

LISTEN  
TECHNOLOGIES



Press & hold  
to speak



# People with hearing aids

Transmitter with neck loop can be used by people with telecoil-equipped hearing aids and cochlear implants

